



**State Water Resources Control Board
 Temporary Urgency Change Order (6/17/2022)
 Russian River Hydrologic Report
 October 14, 2022 - October 20, 2022**

Prepared as a requirement of the Order approving Sonoma Water's Petition for Temporary Urgency Change in Permits 12947A, 12949, 12950, and 16596 (Applications 12919A, 15736, 15737, and 19351).

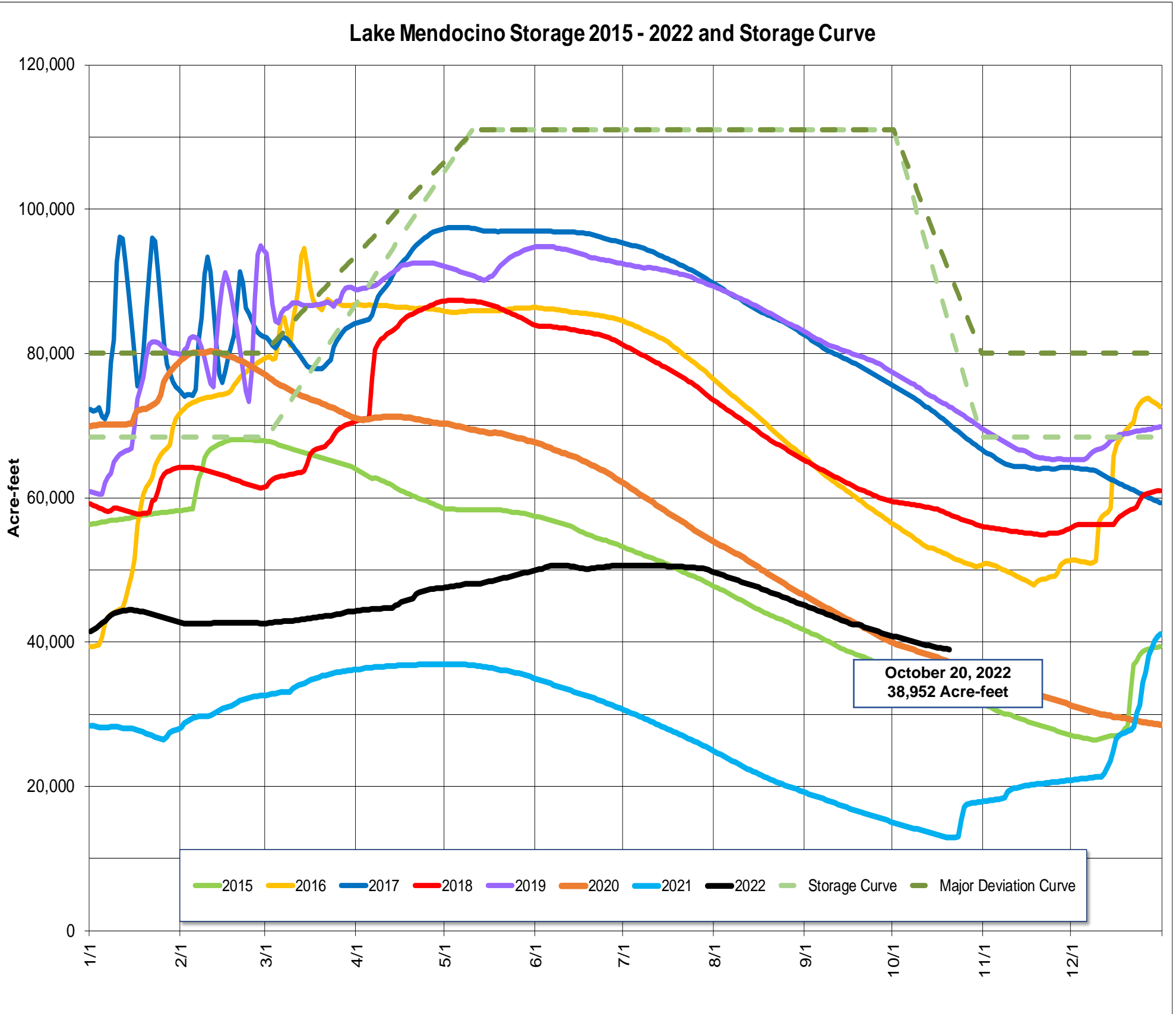
Instream Flow Requirements as of October 20, 2022

Basis	Reach	Instantaneous (cfs)	5-day Average (cfs)
Modified Per Order: Critical Condition	Upper Russian River	15	25
D-1610: Normal Condition	Dry Creek	80	-
Modified Per Order: Critical Condition	Lower Russian River	25	35

Upper and Lower Russian River based on criteria as established in the Order issued 6/17/2022.

Lake Mendocino

Lake Mendocino Storage 2015 - 2022 and Storage Curve

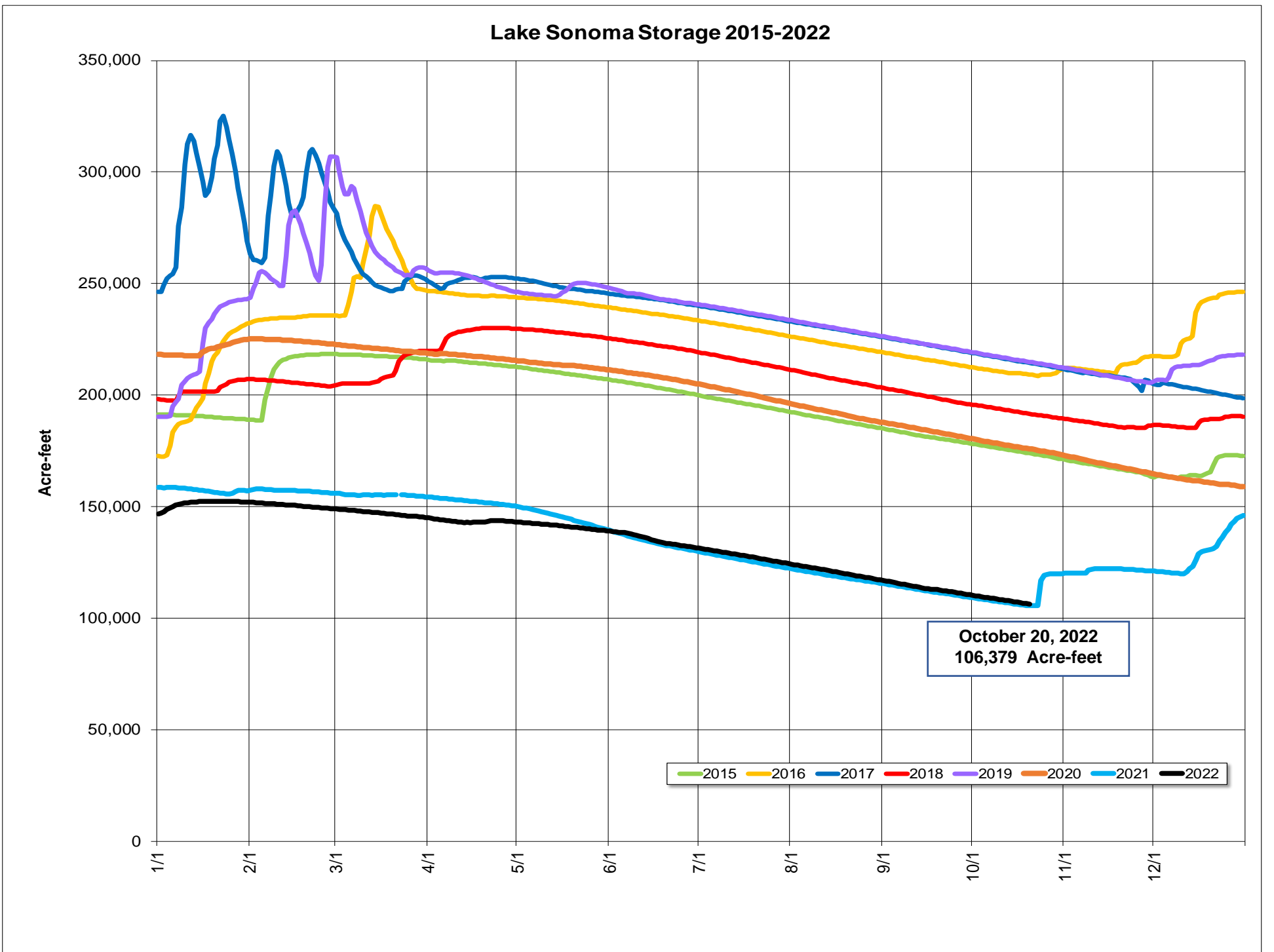


Storage (acre-feet)	October 20, 2022	38,952	
Change in Storage (acre-feet)	Last 30 days	-3,318	Average Daily Rate
	Last 7 days	-554	-79
Daily Inflow (cfs)	Last 7 days	Min	12
		Max	25
		Mean	20
Release (cfs)	Last 7 days	Min	50
		Max	55
		Mean	53

Lake Sonoma



Nathan Baskett, March 3, 2011



Storage (acre-feet)	October 20, 2022	106,379	
		Total	Average Daily Rate
Change in Storage (acre-feet)	Last 30 days	-6,503	-217
	Last 7 days	-1,224	-175
Daily Inflow (cfs)	Last 7 days	Min	0
		Max	1
		Mean	0
Release (cfs)	Last 7 days	Min	87
		Max	94
		Mean	92

Potter Valley Project

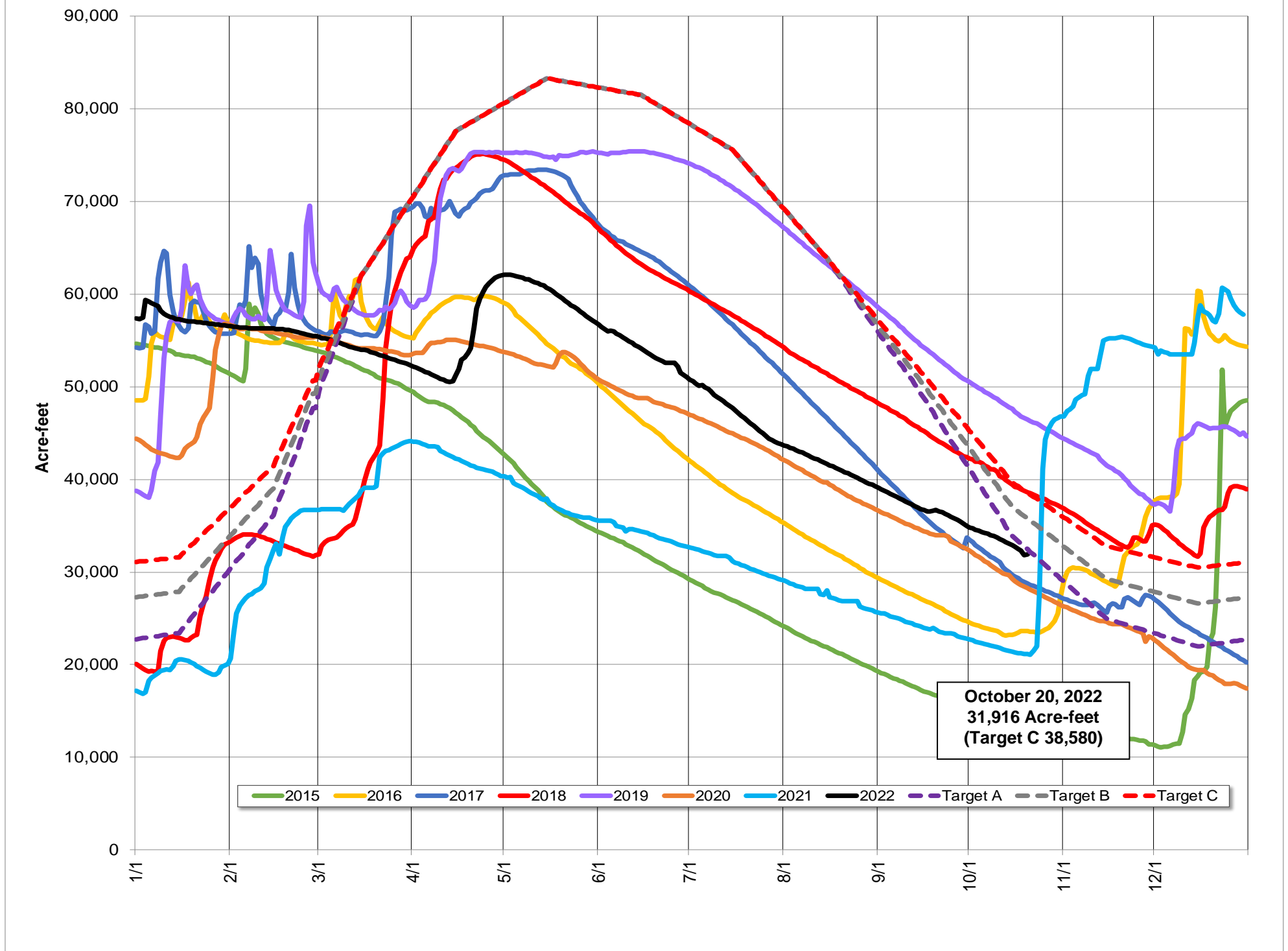
PVP Diversion (cfs)	October 20, 2022	37
---------------------	------------------	----

Lake Pillsbury

Parameter	Date Range	Cumulative	Daily Average
Inflow* (acre-feet)	October 1, 2022 - October 20, 2022	954	48
	Last 7 days	214	31

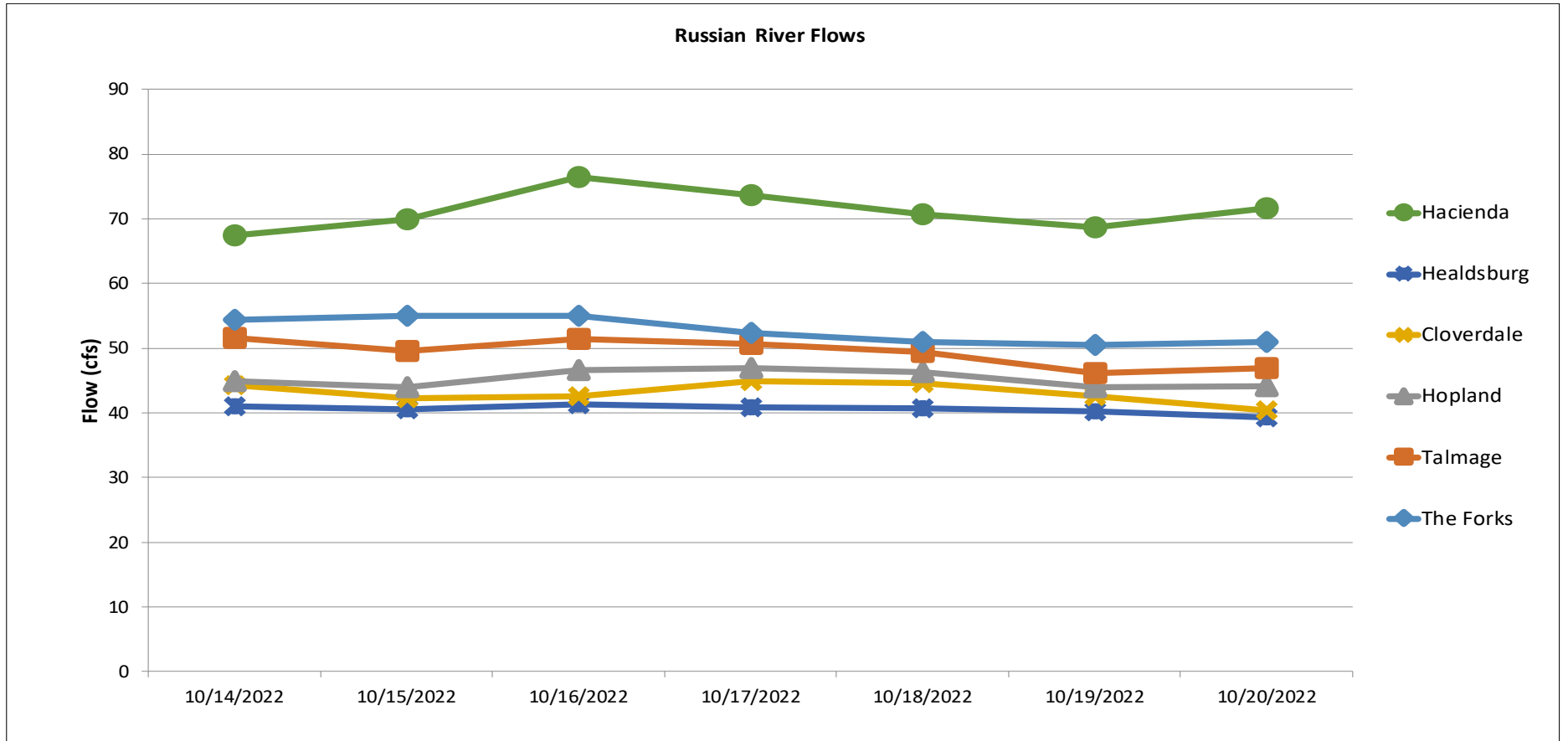
*Inflow calculation based on criteria established in D1610

Lake Pillsbury Storage 2015-2022 and Target Storage Scenarios

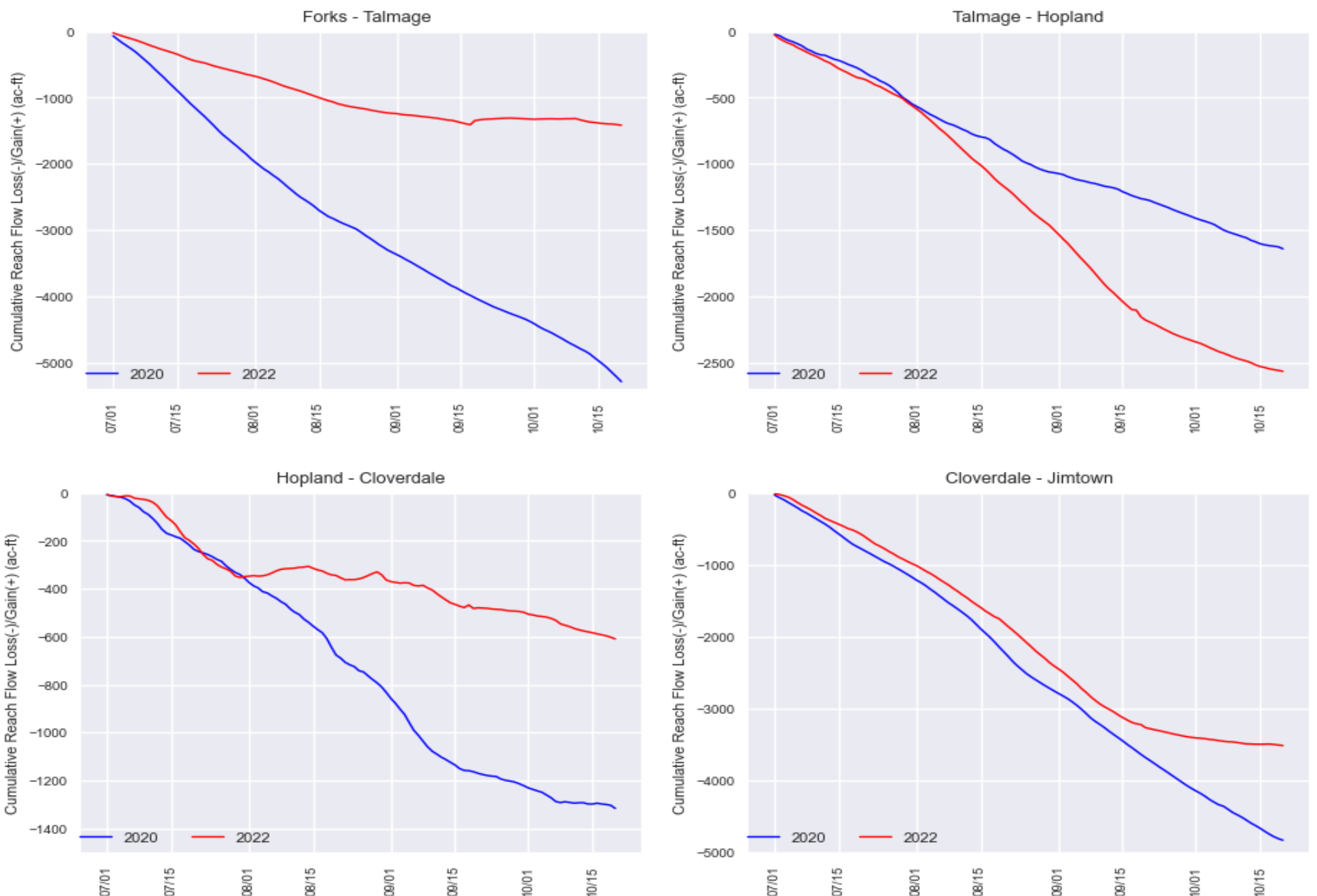


Gage	24-hr Average Flow (cfs)						
	Oct 14, 2022	Oct 15, 2022	Oct 16, 2022	Oct 17, 2022	Oct 18, 2022	Oct 19, 2022	Oct 20, 2022
The Forks*	54	55	55	52	51	50	51
Talmage USGS 11462080	52	50	51	51	49	46	47
Hopland USGS 11462500	45	44	47	47	46	44	44
Cloverdale USGS 11463000	44	42	43	45	45	43	40
Healdsburg USGS 11464000	41	40	41	41	41	40	39
Hacienda USGS 11467000	67	70	76	74	71	69	72

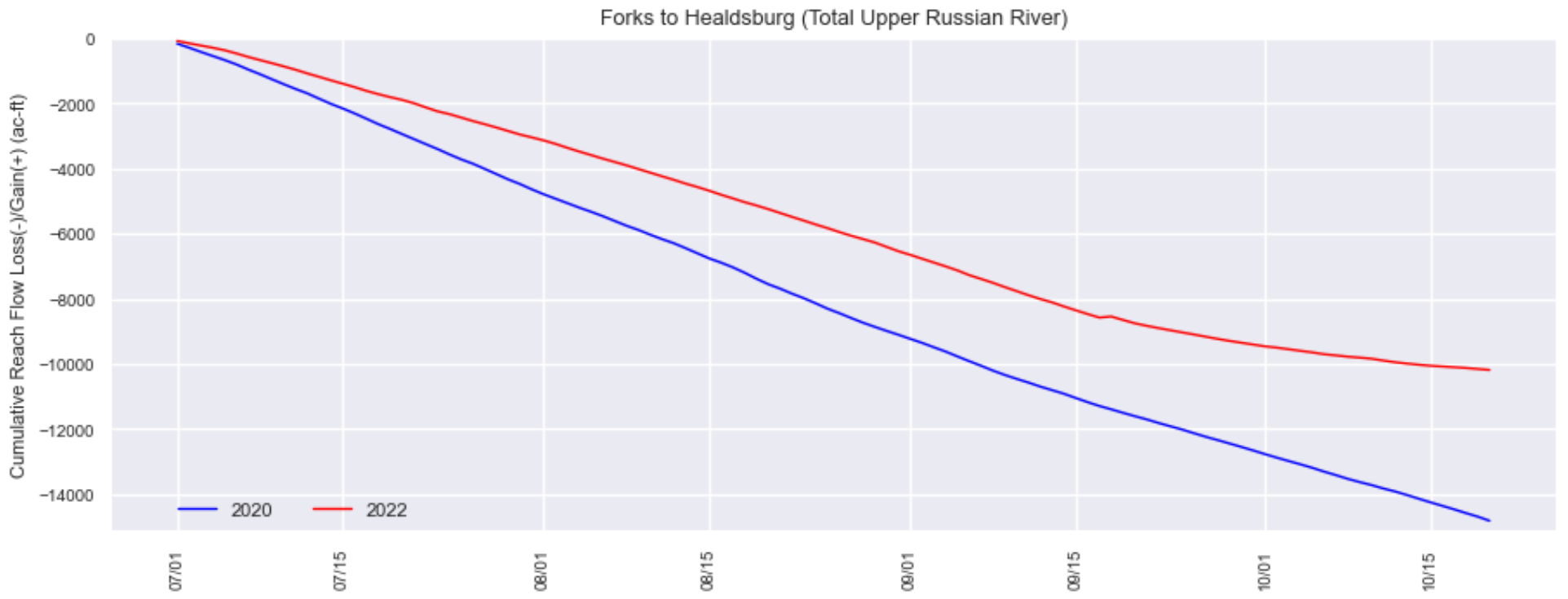
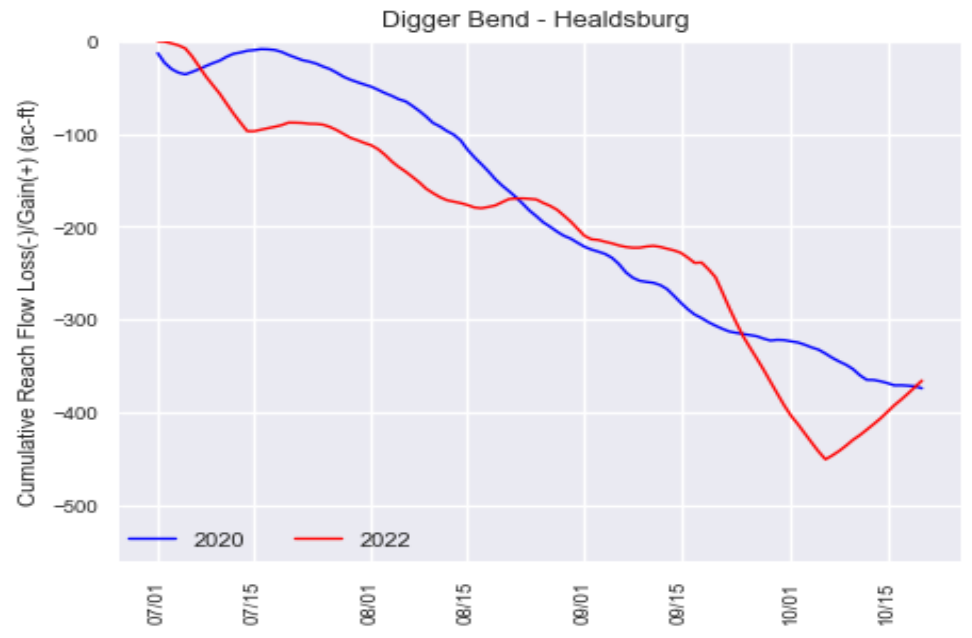
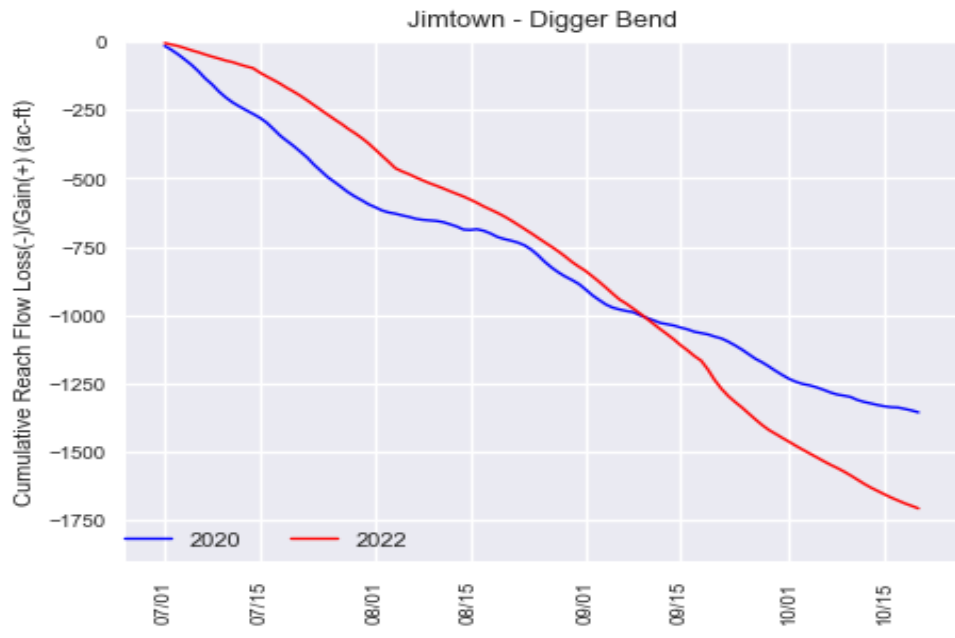
*West Fork(USGS 11461000) + East Fork (Coyote Valley Dam Release)



Upper Russian River Flow Gain/Loss (July 1, 2022 - October 20, 2022)



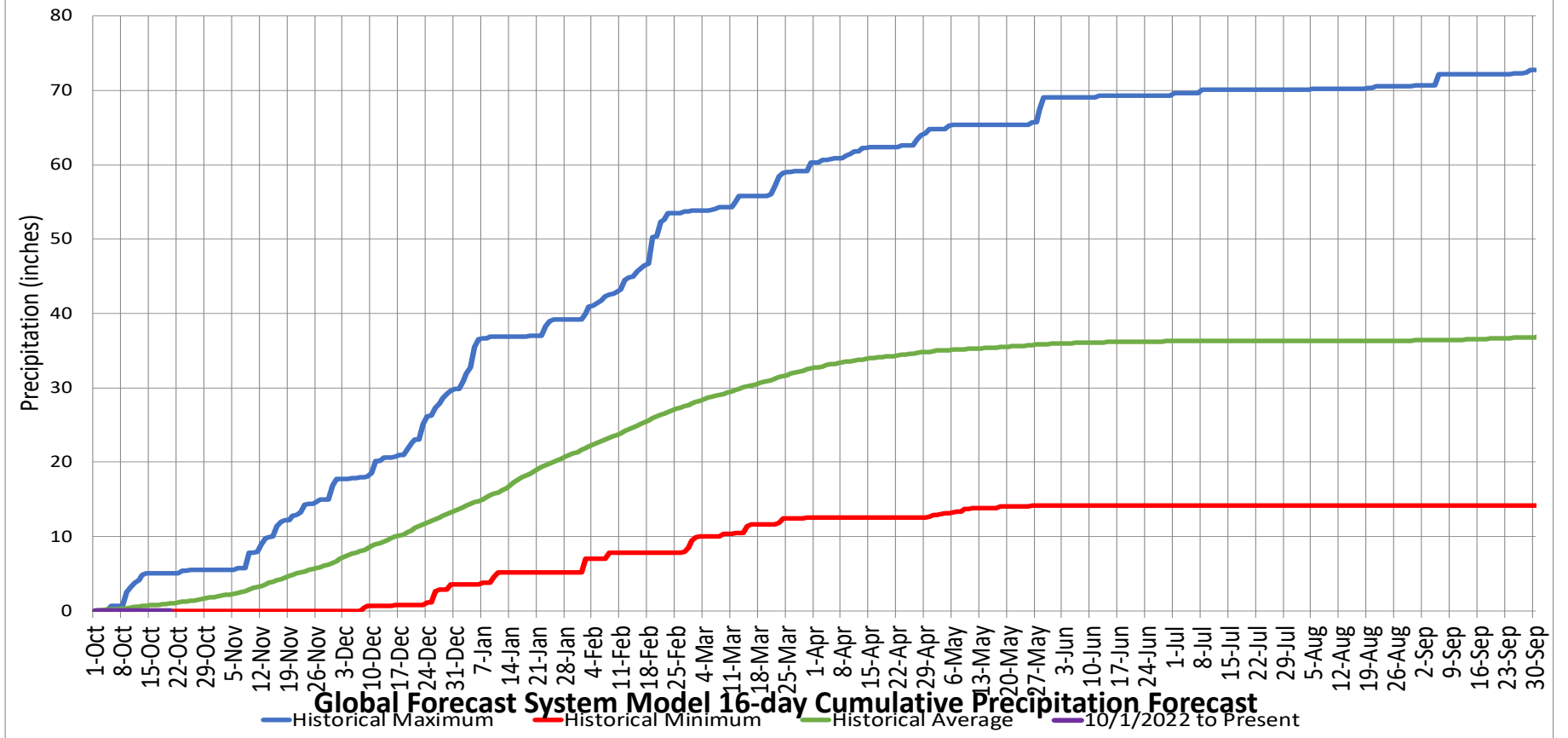
Upper Russian River Flow Gain/Loss (July 1, 2022 - October 20, 2022)



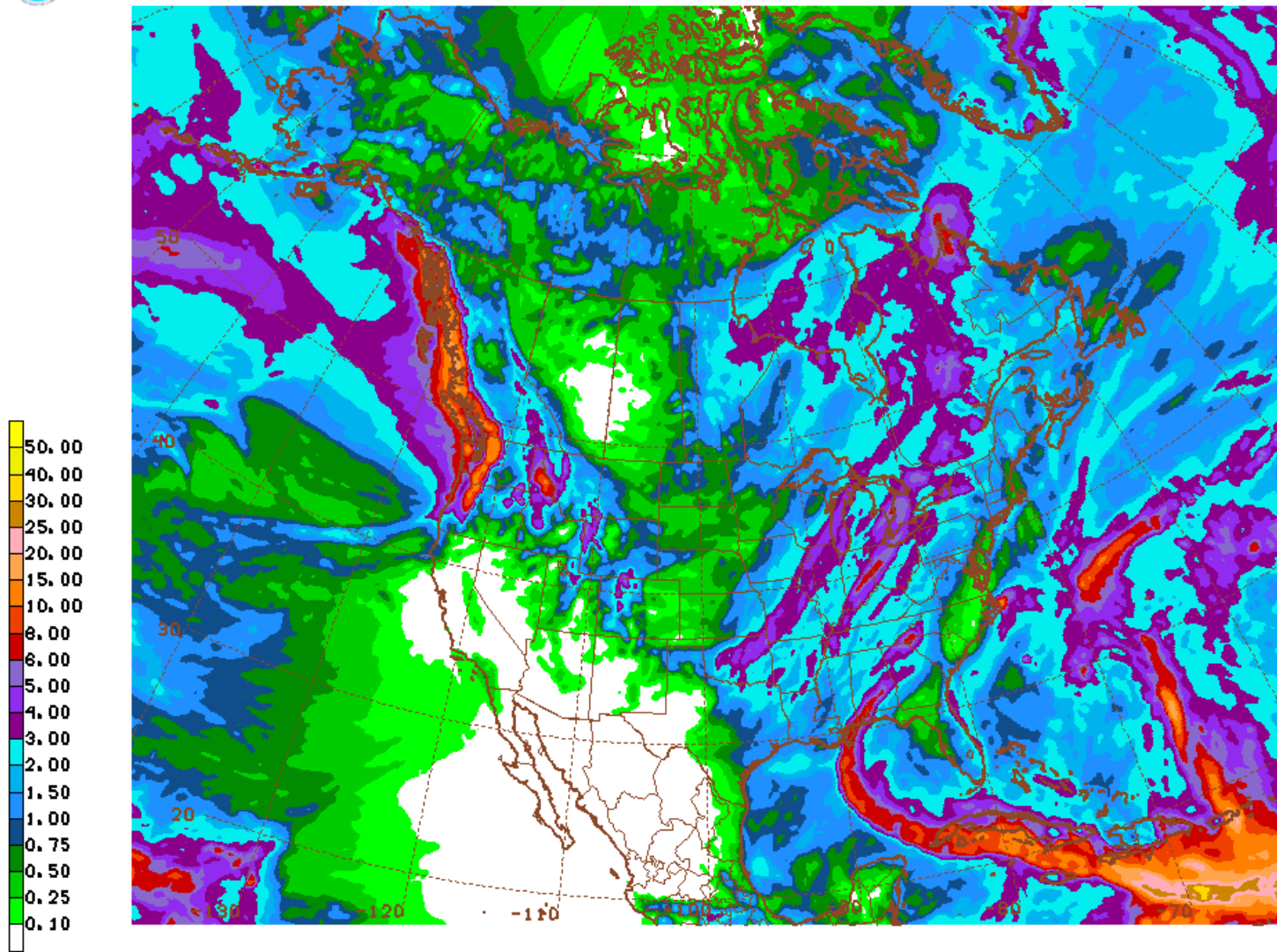
Precipitation

Ukiah Municipal Airport (WBAN: 72590523275 (KUKI))	
Date Range	Cumulative (inches)
Oct 1, 2022 - Oct 20, 2022	0
Last 7 Days*	0.00

Cumulative Precipitation Comparison of Current Year versus Historic Record



GFS 10/24/22 12UTC 384HR FCST VALID MED 11/09/22 12UTC NOAA/NWS/NCEP



GFS MED 221109/1200V384 384HR ACCUMULATED PRECIP (IN)

Date Range	Forecasted Cumulative (inches)
Oct 24 - Nov 9, 2022	0.00

Russian River Fisheries Monitoring

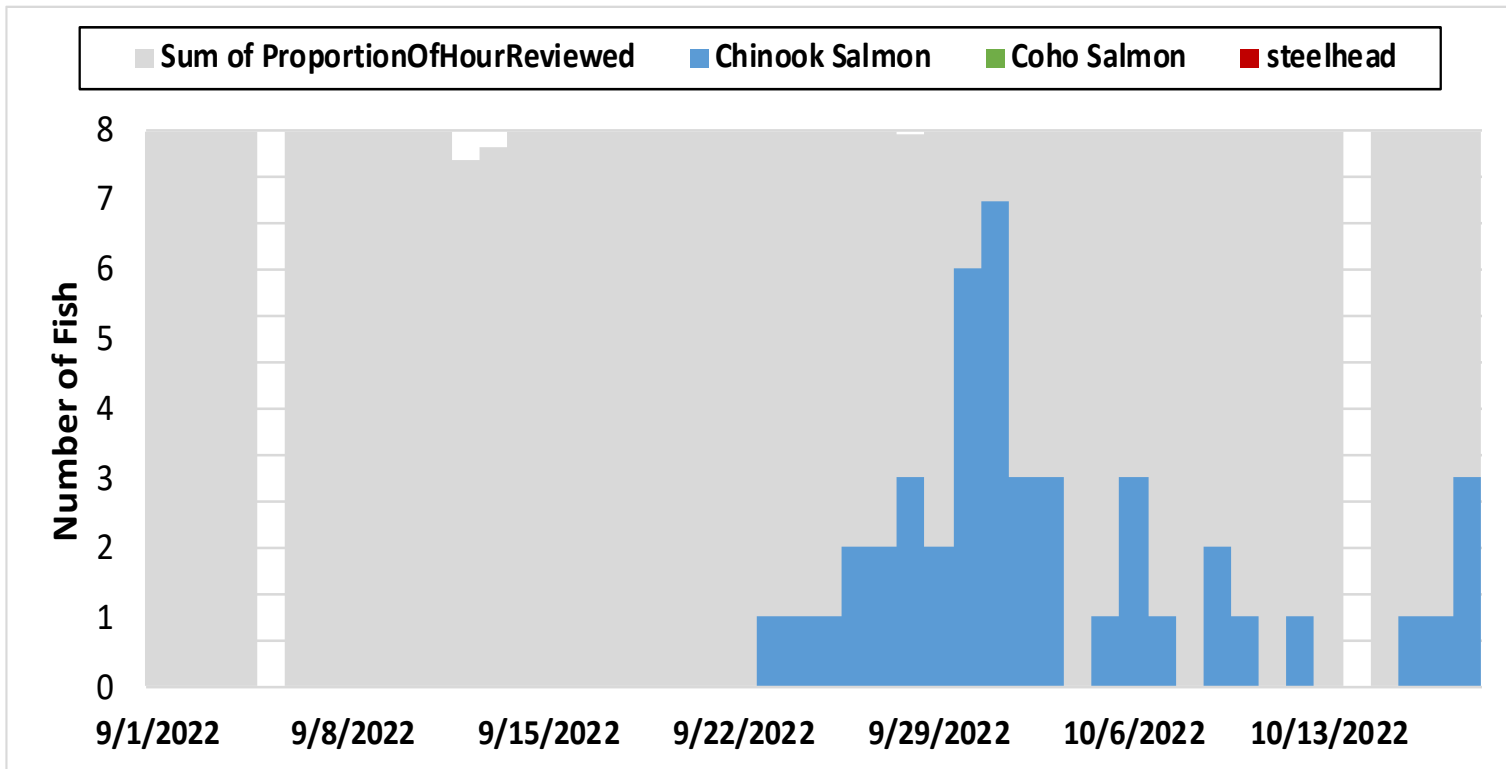


Figure 1. Number of adult salmonids and proportion of each day reviewed for video monitoring data collected at the Mirabel dam, 2022.

Week	Chinook Salmon		Coho Salmon		Steelhead	
	2022	2000-2019 Avg	2022	2000-2019 Avg	2022	2000-2019 Avg
09/01	0	0.05%	0	0.00%	0	0.65%
09/08	0	0.14%	0	0.00%	0	0.65%
09/15	0	0.24%	0	0.10%	0	0.71%
09/22	10	0.59%	0	0.00%	0	0.93%
09/29	22	6.10%	0	0.30%	0	1.30%
10/06	8	3.57%	0	0.61%	0	1.30%
10/13	5	13.30%	0	1.73%	0	2.35%
10/20		13.66%		3.05%		1.42%
10/27		17.31%		1.12%		1.27%
11/03		20.08%		4.47%		2.16%
11/10		9.73%		8.12%		4.88%
11/17		7.69%		23.45%		8.90%
11/24		3.37%		24.77%		14.83%
12/01		2.69%		7.51%		15.17%
12/08		0.74%		9.44%		15.76%
12/15		0.42%		8.83%		15.01%
12/22		0.22%		3.45%		9.24%
12/29		0.09%		3.05%		3.49%

Table 1. Weekly totals of adult salmonids observed on the Mirabel dam video camera.